

Custom Panels and Traction Lockers

built in our modern, full service panel shop complete with design, assembly and testing of customer electrical control panels.

We have experience with Programmable Logic Controllers, PLC's with integrated touch screen, operator stations, VFD controls, DC drives, switchgear and medium voltage cabinets.



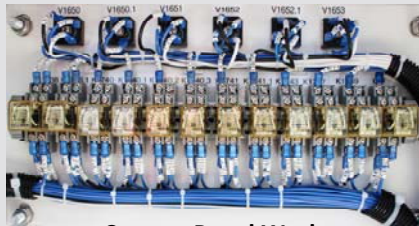
AC and DC Locomotive Traction Lockers

We provide:

- Electrical schematic (ladder and one-line) drafting services
- Solid modeling of all mechanical components and assemblies
- Thermal modeling and analysis of all cabinets
- In-house full load testing before shipping
- Complete Bill of Materials, wiring diagrams and build instructions



Custom Propulsion Rack



Custom Panel Work



REVISION HISTORY				
REV	SHEET	DESCRIPTION	DATE	APPROVED
1		ADDED FUSES AND FUSE BLOCK	02/02/11	BS

ITEM	PART NUMBER	DESCRIPTION	STOCK NUMBER	QTY
1	BUS BAR CON	1"x25"x8", 5H, 0B	COPPER BLANK	6
2	C9002-080	80uf, 600VDC, SCREW TERM.	C44AHG5800ZAQJ	6
3	CAP BANK BUS, 1	5"x 125"x7 3/8" 4H 1B	COPPER BLANK	2
4	CAP BANK BUS, 2	5"x 125"x4 3/4" 2H 0B	COPPER BLANK	1
5	CAP BANK BUS, 3	5"x 125"x2" 3H 0B	COPPER BLANK	3
6	E9001-122	COMPONENT PANEL, 17"x21"	HAMMOND	1
7	J9004-038	NFT3 - DIN RAIL CONNECTOR	NFT3	4
8	K9009-030	AC CONTACTOR, 40A FRAME D	XTCE40D	1
9	K9009-031	AC CONTACTOR, 500A, FRAME M	XTCE500M	1
10	V9001-089	2" dia X2 25"	2015-4G	12
11	Y9007904	INSTALLING BRACKET		2
23	F9001-004	BUSSMAN FUSE BLOCK	BM9033SO-BUSSMAN	1
24	F9002-065	13/32" DIA. x 1.5"	6JX30 FERRAZ	3

All panels are designed with 3D modeling software to assure mechanical compatibility and problem free installations.

Complete Bills of Materials are automatically generated by our design software

www.americantraction.com
10076 Bavaria Road | Fort Myers, FL 33913 USA | 239-768-0757

© American Traction Systems 2014